

NOEVIR

Treatments



New!

Neck & Décolleté Cream

Code 02220 - **\$100** (\$110 Canada)
1.76 oz. (50g)

Product Overview

This innovative, multi-tasking formula is designed to nourish and improve the appearance of the delicate skin on your neck & décolleté area. It is important to take proper care of this fragile skin on your neck and décolleté to help maintain supple, youthful looking skin. This anti-aging formula intensely moisturizes your skin for a firmer look while minimizing the appearance of uneven skin tone. With immediate and long term benefits it provides, your neck and décolleté will appear smoother, brighter and more defined.

Suitable for all skin types.

Key Features & Benefits

- Immediately plumps skin with moisture to smooth the appearance of lines and wrinkles.
- Multi-targeted formula addresses concerns of premature signs of aging.
- Lightweight texture melts into the skin without feeling greasy, skin is left soft and velvety.
- Unique combination of botanical extracts help promote the appearance of supple, bright and tightened neck & décolleté area.
- A soft, delicate fragrance of muguet and lilac treats your senses to help enhance beautifying benefits.

Livistona extract: *derived from fruits of Chinese fan-palm, its potent nutrients nourishes skin to help promote the appearance of supple, firm and youthful skin.*

Edelweiss extract: *an enduring symbol of the Alps, this plant is not only celebrated for its beauty but also for its resiliency under harsh environment. Its antioxidant properties help brighter-looking skin while defending against the premature signs of aging.*

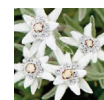
Peony root extract: *The graceful flower is often referred as the “Queen of Flower”. Peony has been used for centuries in traditional Chinese, Ayurvedic and Greek herbal medicine. Its root is considered as a powerhouse of nutrients and used to help promote youthful looking skin with a beautiful glow.*

Usage Guide

Apply to clean skin morning and night. Take pearl-size amount and gently spread over entire neck and décolleté area in downward motion.



Livistona



Edelweiss



Peony Root